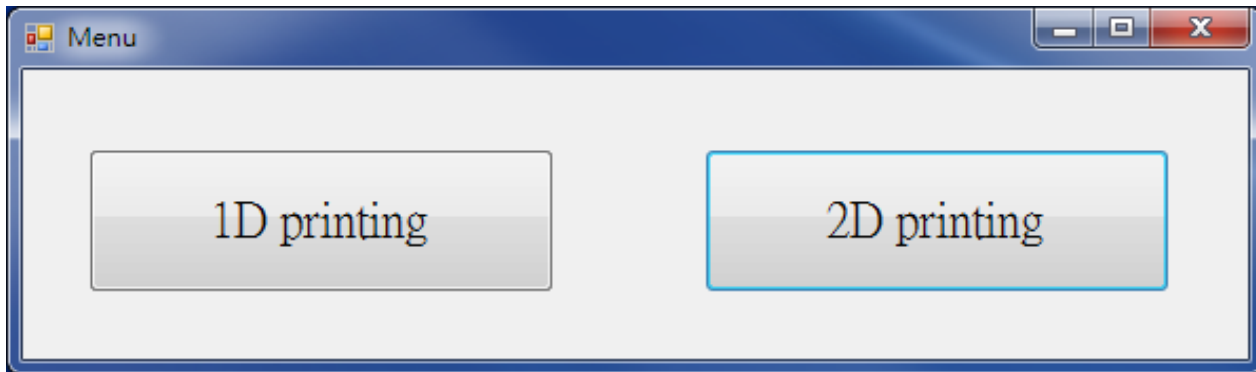


To: The Chinese University of Hong Kong - Department of Chemical Pathology
Attention: Ms. Elena Lo (Department of Chemical Pathology)
Tel: (852) 37636028 Fax: (852) 2636 5090
Date: 25May, 2017

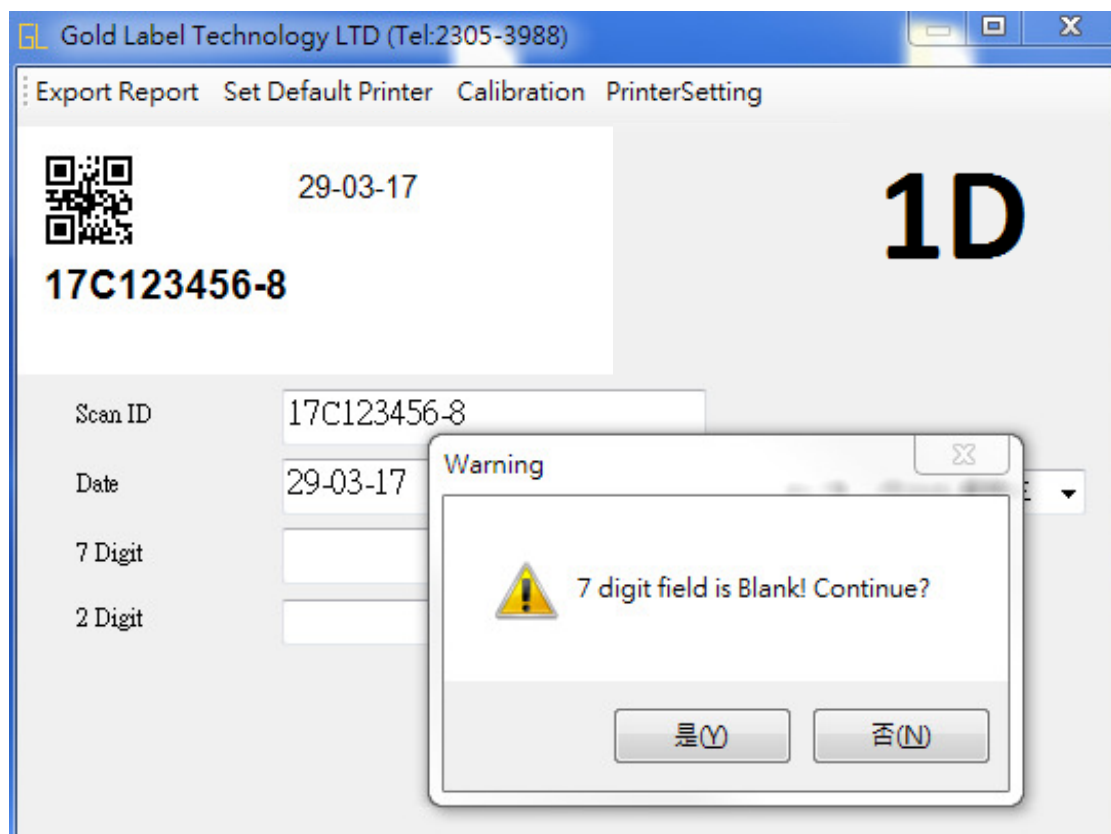
Subject: Printing Program Cap. Screen **V1.3**

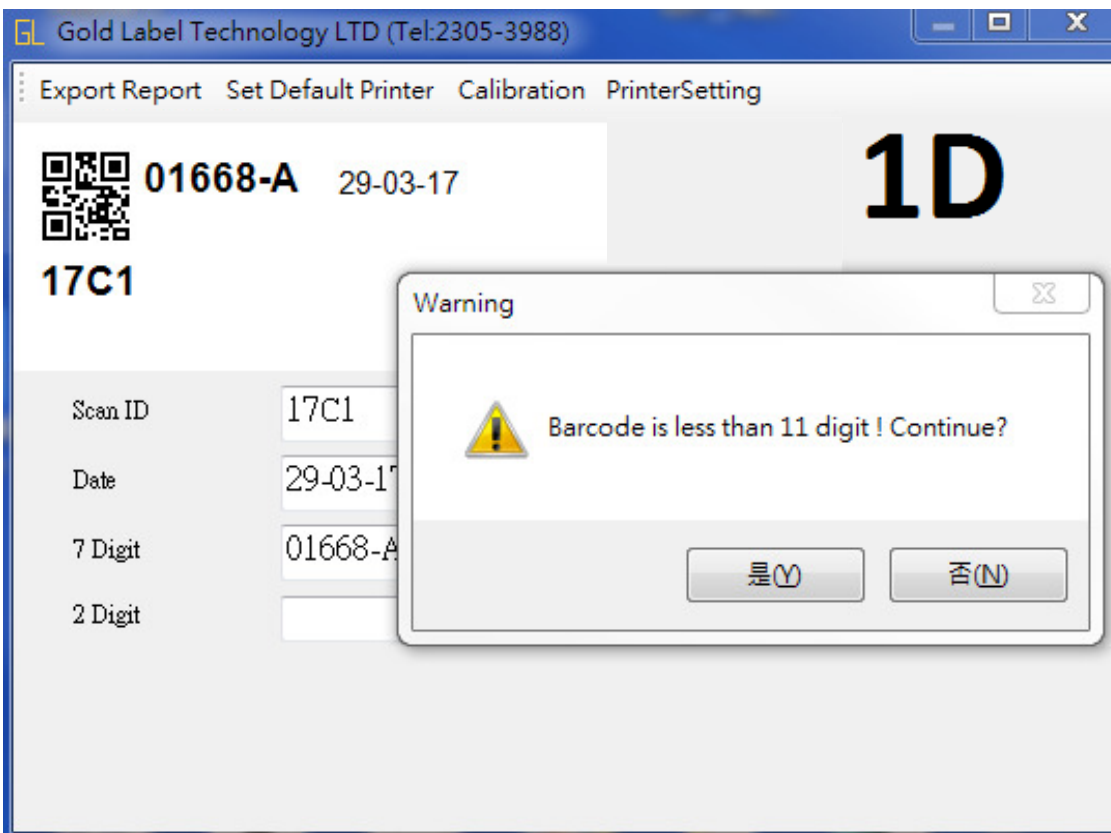
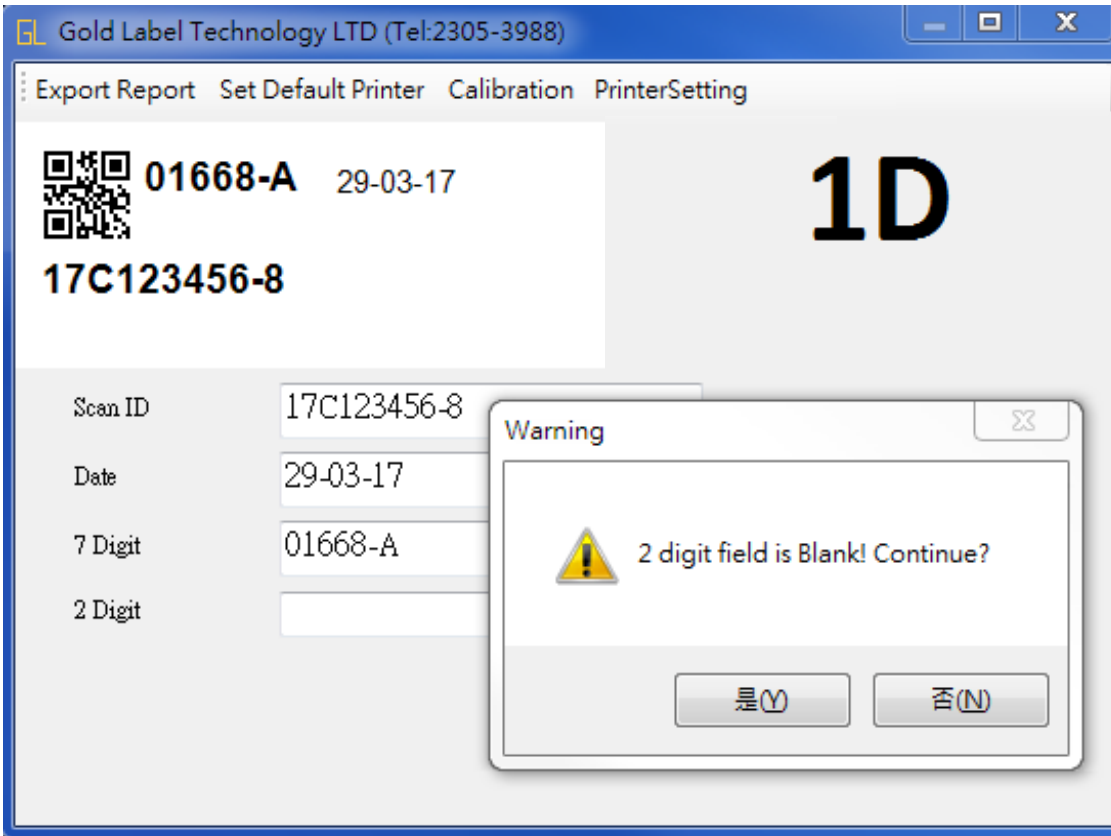
From: Gold Label Technology Ltd (Daniel Man)
Page: 1-4

Printing Program - Main Page

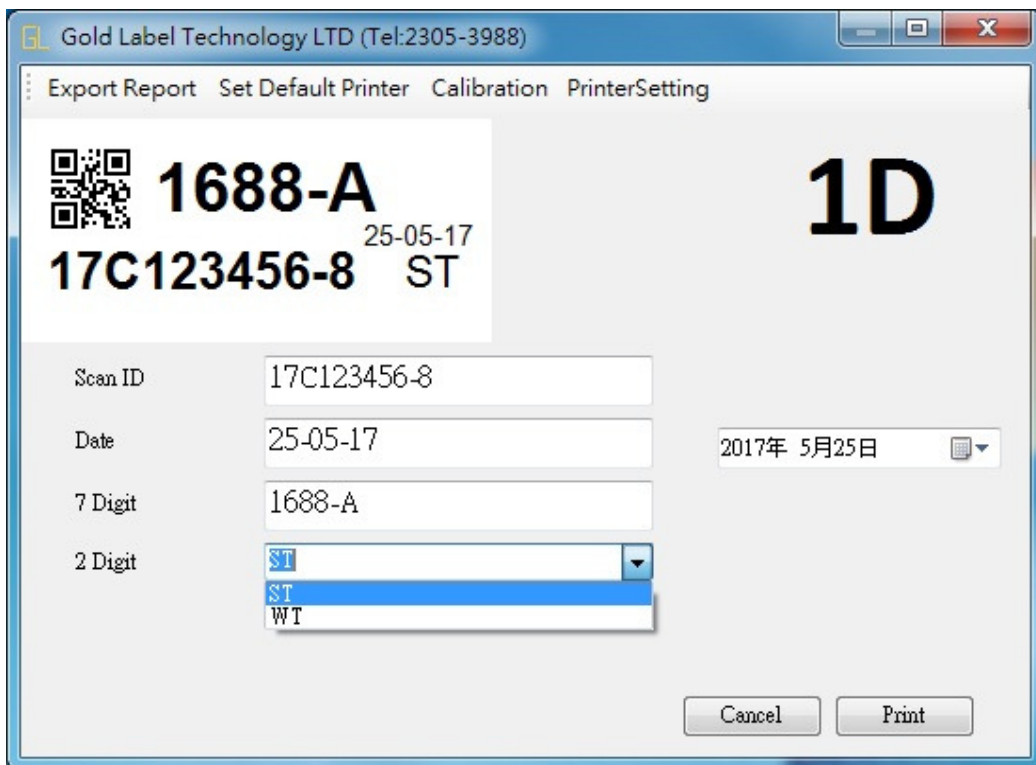


Press "1D Printing", then go to the printing template on 1D



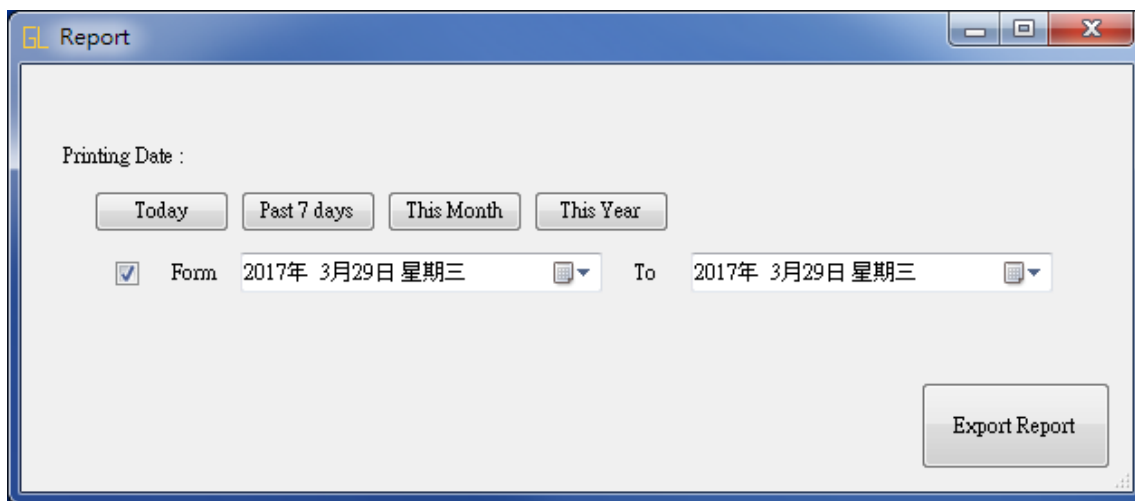


Allow to select "ST" or "WT" the last two digits, user also can fill in other wordings by manually



User also can press "Cancel" to stop the print job

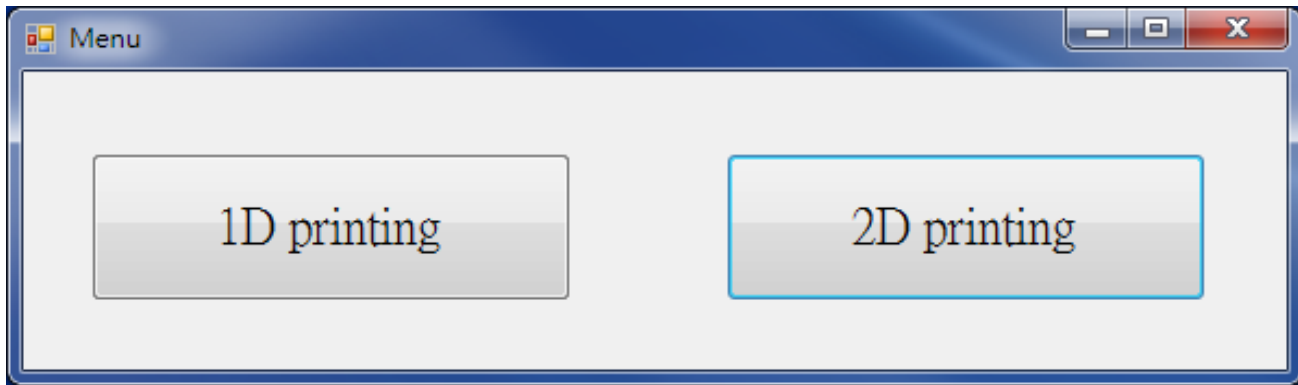
Clicked "Export Report", you can send an Excel for reference



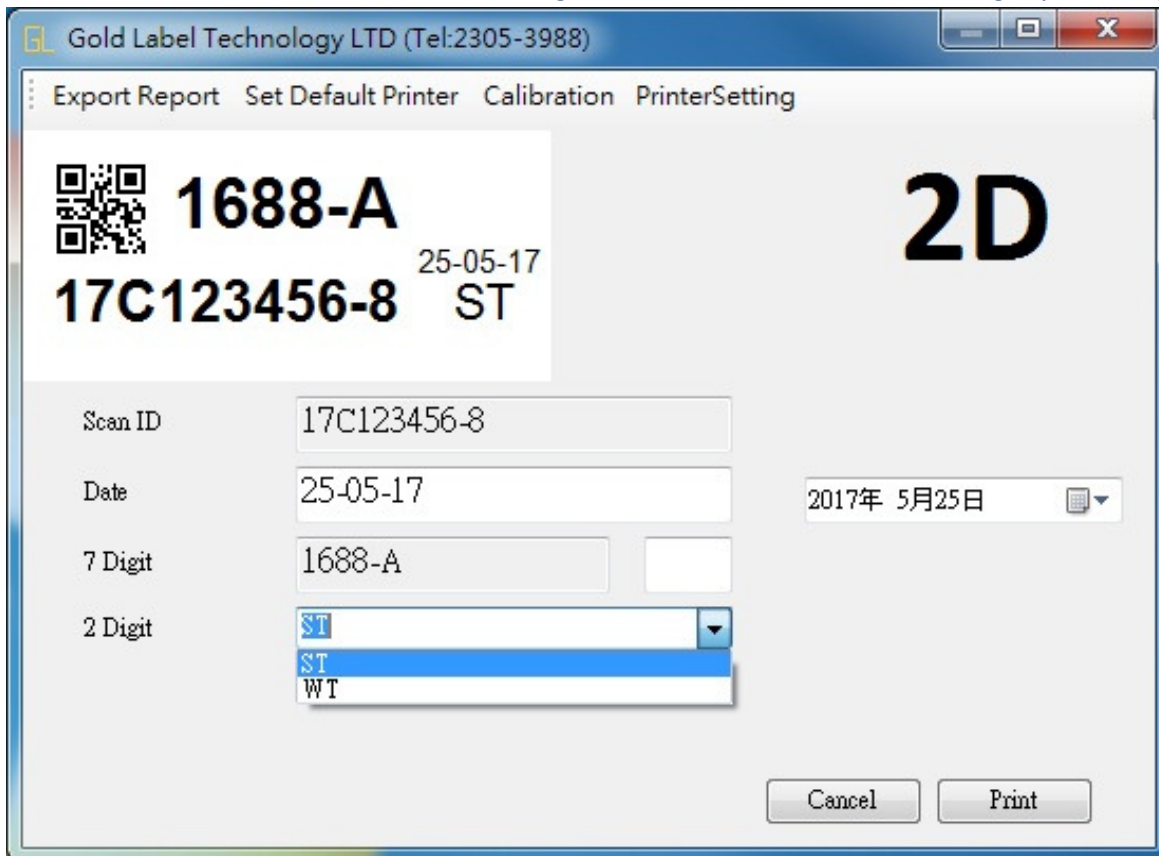
The screenshot shows an Excel spreadsheet with the following data:

	A	B	C	D	E	F	G	H
1	Barcode	Six Digit	Three Digit	Date				
2	17C123456-8	1688-A	WK	29-03-17				
3	17C123456-8	123	WK	29-03-17				
4								
5								
6								
7								
8								
9								
10								
11								

Press "2D Printing", then go to the printing template on 2D



Allow to select "ST" or "WT" the last two digits, user also can fill in other wordings by manually



User also can press "Cancel" to stop the print job

Clicked "Export Report", you can send an Excel for reference

